

chapter 2

Installing Mastercam X3

This chapter describes installing Mastercam on a single computer or on a client computer in a network. Installing Mastercam on a network server and other administrator tasks are described in Appendix A.

In this chapter, you will learn about:

- ❖ **Running the Installation Program** *page 16*
- ❖ **Entering the SIM Update Code** *page 24*
- ❖ **Troubleshooting** *page 28*



Running the Installation Program

Mastercam X3 is distributed in several formats:

- CD (two-CD set)
- DVD (available on request from your Mastercam Reseller)
- Download from www.mastercam.com (only with a current Mastercam Maintenance contract)

Note: Autodesk Inventor View is no longer distributed on CD. It is included in the DVD installation and can also be downloaded from www.mastercam.com. Inventor View provides Autodesk Inventory compatibility if you do not have Inventor installed on the same system as Mastercam.

This section describes installing Mastercam from CD.

Note: This section describes a typical installation using default settings. Installation behavior can be modified by settings in the `mastercam.ini` file. For a description of this file, see [Setting Installation Defaults](#) on page 57.

Disk 1

Use CD Disk 1 to install Mastercam X3. It provides two types of installations:

- **Express Install (Recommended):** Installs Mastercam X3 with minimal interaction with you.
- **Custom Install:** Use this option to migrate customized files from a previous installation. It provides options to install or remove selected features, to reinstall (repair) the most recently installed features, and to uninstall Mastercam completely.
- **View What's New File:** Displays the Whats New? file, which contains information on this Mastercam release.
- **Contact Us:** Lists information you can use to contact CNC Software, Inc.
- **Exit:** Closes the installation program.



IMPORTANT: Before proceeding, make sure that you have prepared for the installation as described in Chapter 1 of this guide.

► To perform an Express Install:

- 1 Insert Disk 1 and choose Install Mastercam X3.



- 2 Choose the Express installation type, and then choose OK.

Note: Customized files will be migrated unless this feature is disabled in the mastercam.ini file.

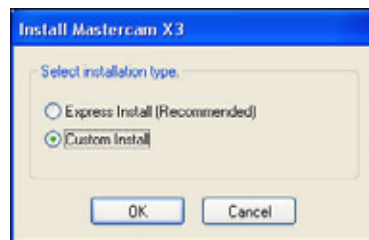


- 3 Mastercam X InstallShield Wizard runs. Follow the on-screen instructions. Throughout the installation, click **Next** to advance to the next step, **Back** to revert to the previous screen, and **Finish** to complete an installation.

- 4 When the license agreement is displayed, you must accept it to continue the installation.
- To perform a Custom Mastercam installation (migrate, modify, repair, or remove):
 - 1 Insert Disk 1 and choose Install Mastercam X3.



- 2 Choose the Custom installation type, and then choose OK.



- 3 Mastercam X InstallShield Wizard runs. Follow the on-screen instructions. Throughout the installation, click **Next** to advance to the next step, **Back** to revert to the previous screen, and **Finish** to complete an installation.
- 4 When the license agreement is displayed, you must accept it to continue the installation.
- 5 When requested to enter user information (name and company), you must enter it to continue the installation.

- 6 If a previous Mastercam X version is installed, you have two choices:



- ♦ **Replace Previous Version:** Replace your previous Mastercam X installation by installing Mastercam X3 into the same folder as your current Mastercam. The installation program:
 - ♦ Uninstalls the current version.
 - ♦ Installs Mastercam X3 into the folder you indicate.
 - ♦ If a previous version of Mastercam X2 is present, gives you the opportunity to migrate customized files from it.

- ♦ Gives you the opportunity to backup customized files from the version you are replacing.



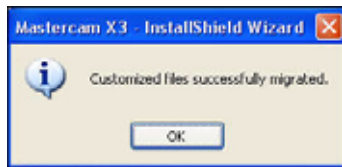
Choose Yes or No. If you choose Yes, indicate the folder where you want to store the backup files. We strongly recommend that you back up your files.

- ♦ **Leave Previous Version:** Install Mastercam X3 in a different folder so that you keep the previous versions installed. (This is the default setting.) If the existing Mastercam installation is Mastercam X2 or one of its maintenance releases, you will have an opportunity to migrate certain customized files to the new folder. If you do not have Mastercam X2, you will have to migrate your customized files manually. See the *Mastercam X3 Transition Guide* for detailed information on migrating and converting files. It will be installed in PDF format in the \Documentation folder.
- 7 Indicate the folder where you want to install Mastercam X3. You can accept the recommended folder, choose a different folder, or create a new folder by entering a new folder name.
 - 8 Select your SIM type. Select HASP if your SIM is a single Mastercam seat license. Select NetHASP if your SIM is a network license.
 - 9 Select the default units. Regardless of the default units you choose, you can open and program parts in the other units.
 - 10 Choose Install. The installation program runs.

- 11** If there is a previous Mastercam X2 version still installed, choose the version you want to migrate from, or reject migration.



- 12** When the migration is complete, you will be notified. Click OK.



To see a list of migrated files, open Migration Log.txt in the root of your Mastercam X3 installation.

If you are not on Mastercam Maintenance, you must also update your SIM with an update code. See **Entering the SIM Update Code** on page 24 for more information.

Disk 2

Disk 2 contains optional products, as well as some of the same options as Disk 1. You can add these optional products to your installation at any time.



- **Sample Files:** Installs sample files that illustrate the features of each Mastercam product, and the Mastercam X Art Classic Design Library. You will have an opportunity to select which sample files you want to install. You can install sample files at the same time as you install Mastercam X3 or later. Adding sample files after you have installed Mastercam is described next.
- **Videos:** Installs videos that highlight the features and newly added functions of this release. You can also download these and other videos from www.mastercam.com.
- **NetHASP Server:** Installs the NetHASP server software for support of network licensing. This installation is described in [Installing the NetHASP Server](#) on page 61.
- **NetHASP Monitor:** Installs the NetHASP Monitor utility (aksmon.exe), which lists all users that are logged in to the NetHASP server at a specific point in time. This installation is described in [Monitoring NetHASP Users](#) on page 72.
- **Contact Us:** Lists information you can use to contact CNC Software, Inc.
- **Exit:** Closes the installation program.